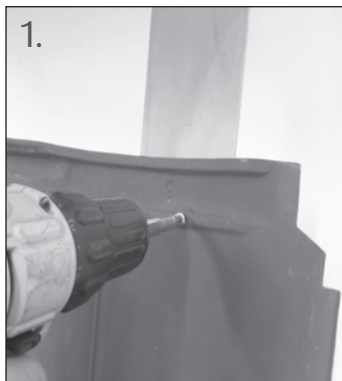
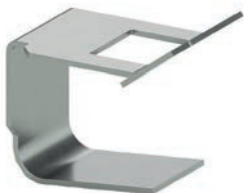
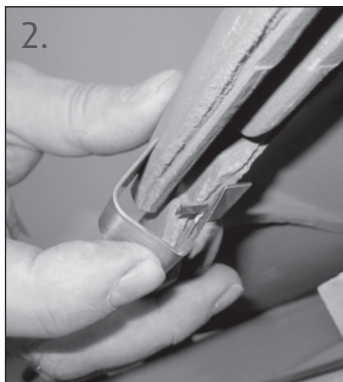


# Montageanleitung Installation instruction



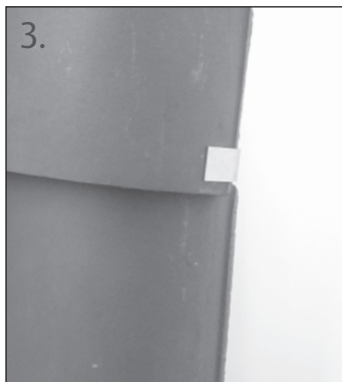
Dachpfanne im Kopf mit Schraube befestigen.

Secure roof tile at the top with a screw onto the batten.



Ortungsklammer an der Seite so aufdrücken, dass ...

Push verge clip onto the side ...



... zwei Dachpfannen miteinander verbunden werden.

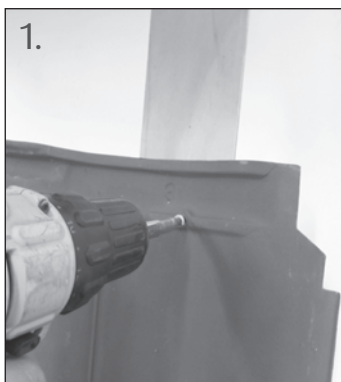
... so that two roof tiles are connected and held together via the clip.

> Montage nur durch Facharbeiter. Die aktuellen Vorschriften für Dacheindeckungen und Herstellervorschriften sind dabei zu beachten.

> Installation only by authorised professionals. Current laws and regulations for roof and storm protection must be observed.

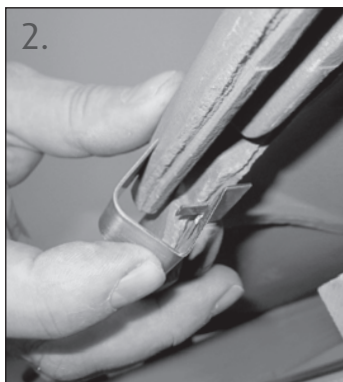
# Instructions de montage

## Monteringsvejledning



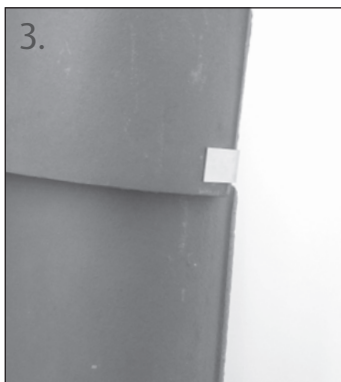
Fixer le haut de la tuile à l'aide d'une vis.

Fastgør tagstenen i toppen med en skrue.



Insérer le crochet de rive par le côté et presser ...

Tryk tagbinderen til gavludhæng fast på siden, således at ...



... pour réunir et maintenir deux tuiles.

... to tagsten forbindes med hinanden.

> Montage uniquement par un spécialiste. La réglementation actuelle en matière de couverture et les instructions du fabricant doivent être respectées.

> Skal monteres af relevant faglært håndværker. De aktuelle forskrifter for tagdækninger samt producentens forskrifter skal overholdes.